

LONDON'S MOST CHERISHED
Historic Building



Windermere
ON THE *Mount*
RETIREMENT RESIDENCE



History OF THE MOUNT

On October 6, 2006, one of London's most cherished historic buildings began a new chapter in its long and impressive history. Having already served the community as a convent, orphanage, and private school for girls, the building and its grounds were now the official home of Windermere On The Mount, London's most exclusive retirement residence.

This was not the first luxurious residence to be situated on the property, however. In 1867, the Anglican Church purchased a parcel of land atop a hill overlooking the Thames River, and commissioned the building of Hellmuth Ladies' College.



Mount St. Joseph - 1954

No expense was spared to create a school reminiscent of an English estate house, with acres of parkland, spacious rooms, and lavish details such as Venetian glass doors, ornate chandeliers, and polished floors. The school's small chapel, named St. Anne's Chapel in honour of the Lady Principal of Hellmuth College, Anne Mills, was built just a short walk away.

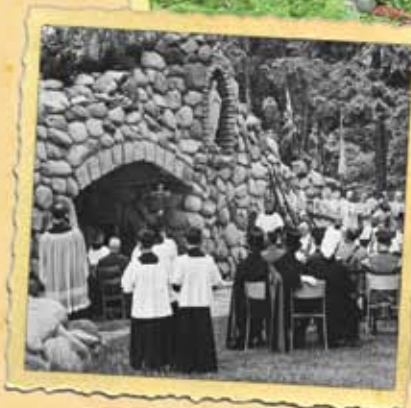
The school itself was named after Bishop Isaac Hellmuth, the founder of the University of Western Ontario and the sole proprietor of Hellmuth Ladies' College. In addition to housing young women pursuing their education, the school is also said to have hosted European nobles and members of royalty visiting Bishop Hellmuth.

COMBINING WORSHIP AND CARE

The building took on a new role in 1899, when it was purchased by the Sisters of St. Joseph, a Roman Catholic order of sisters dedicated to caring for orphans and the elderly, educating young girls, and ministering to the poor. Under its new name, Mount St. Joseph Mother House served as both an orphanage and a convent for the sisters. Although Mount St. Joseph Orphanage Chapel was added to the property in 1908, the sisters attended mass at St. Anne's Chapel for many years, until dampness forced it into disuse. The chapel remained an integral part of Mount St. Joseph, however, when its bricks were brought in to repair damage caused by a fire in 1925.

On June 20, 1954, the Sisters of St. Joseph formally opened a new Motherhouse on the same property. Reverend Mother Margaret Coughlin designed the building in collaboration with architects, *Watt and Tiltman of London*. This building included a private girls' academy on two floors of the west wing, plus a stunning chapel featuring hand-carved wood, marble walls and floors, and elaborate stained glass windows.

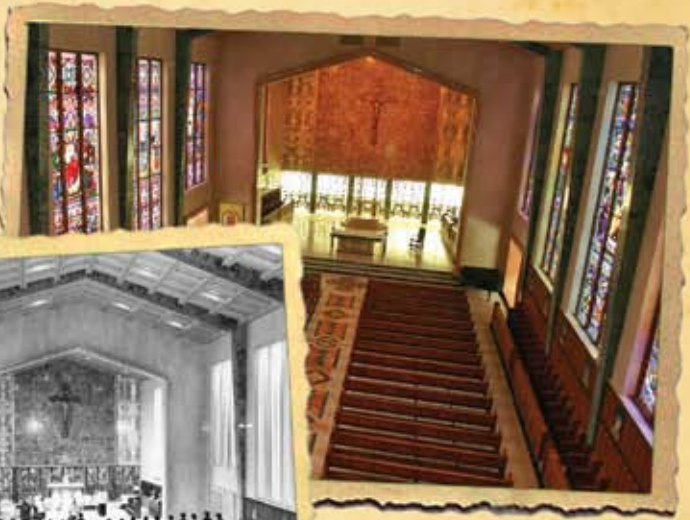




Mount St. Joseph Grotto
September 12, 1954

UPDATING A LONDON LANDMARK

In 2006, the building and grounds entered their new phase as Windermere On The Mount, a five-star boutique retirement residence. Despite the extensive renovations required to convert Mount St. Joseph into a luxurious retirement residence, the new owners made it a priority to preserve the building's original charm and finishes throughout. Visitors to Windermere On The Mount are instantly struck by the grandeur of the foyer, with its stately brown Belgian marble pillars and walls of Perlato and Italian marble.



Mount St. Joseph Chapel
Opening Ceremonies - June 20, 1954

AN OASIS OF PEACE AND BEAUTY

Perhaps most striking, however, is Mount St. Joseph Chapel, where traditional and modernistic architectural styles blend to inspire awe and serenity in our residents and guests. Roman Travertine marble opens into the chapel, which features an altar carved from a single piece of green St. Denis marble, a 14-foot laminated oak cross, and a mosaic tile depiction of the Stations of the Cross. The Tree of Life stained glass windows are the design of the Academy's first art teacher, Sister Marie Celine Janisse, while those behind the main altar were formerly located in the Mount St. Joseph Orphanage Chapel of 1908.

Even the residence's 20 acres of grounds retain the tranquility of their former life, with scenic walking paths, a beautiful stone grotto dedicated to the Blessed Mother Mary, and an untouched ravine which is home to a variety of songbirds and small animals.



Mount St. Joseph
Opening Ceremonies - June 20, 1954

OUR STAFF WELCOMES YOU

For more than 140 years, this site has welcomed people from all walks of life and from all around the world. Windermere On The Mount is proud to carry on the legacy, as we welcome seniors with a peaceful, resort-like residence in the heart of London.

Tours of our residence and model suites are available. Meet any member of the management team, and we'll be pleased to begin your journey at Windermere On The Mount.

The historic black and white photographs are from the archives of the Sisters of St. Joseph of London.



Windermere
ON THE *Mount*
RETIREMENT RESIDENCE

1486 Richmond St., London (519)432-9863
www.reveralliving.com